

PLAN4

Von der  
Bestandsaufnahme zur  
CO<sub>2</sub>-Reduktion:  
"Die Kraft digitaler  
Tools"





1%







**4,2%**

Statistisches Bundesamt (Destatis), 2023





# RICHTLINIEN



§

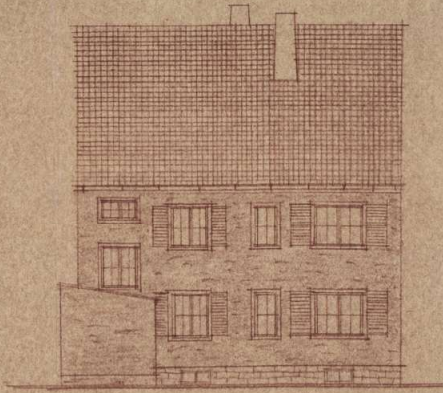




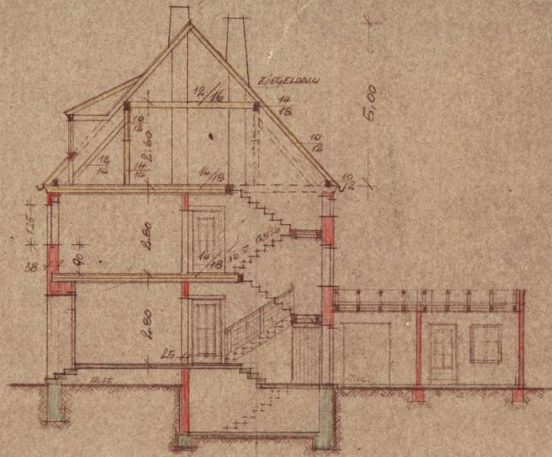




ANSICHT - BOTENGASSE



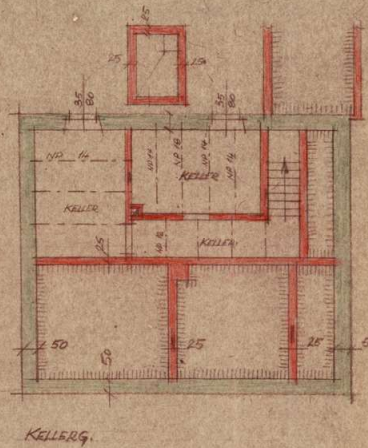
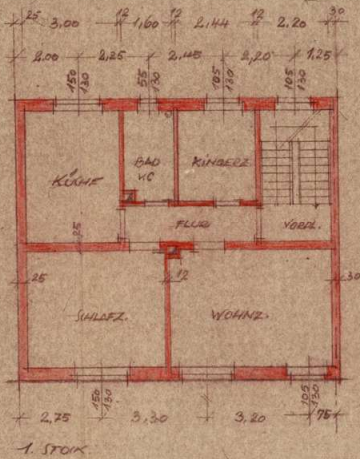
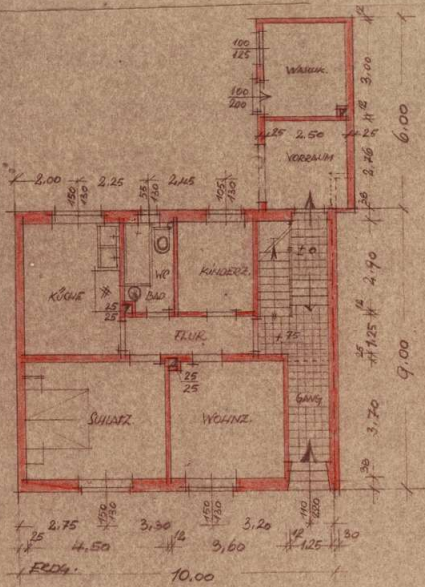
HOF-ANSICHT



SCHEMME



LAGEPLAN 1:1000



KELLER

PLAN 1:100

ZUM WIEDERAUFBAU DES WOHNHUSES FÜR  
HERRN JOSEF BOGNER IN NEUMARKT / OBF  
BOTENGASSE 6.

BÄUERIN:

Josef Bogner

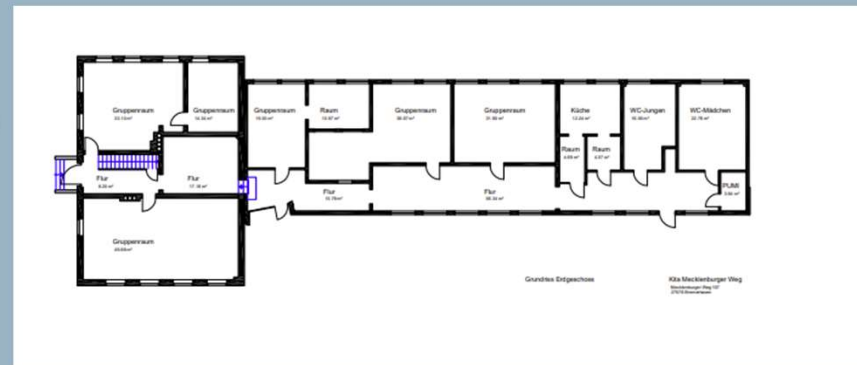
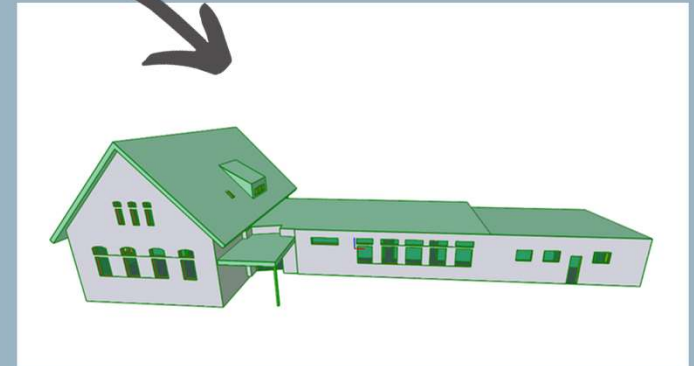
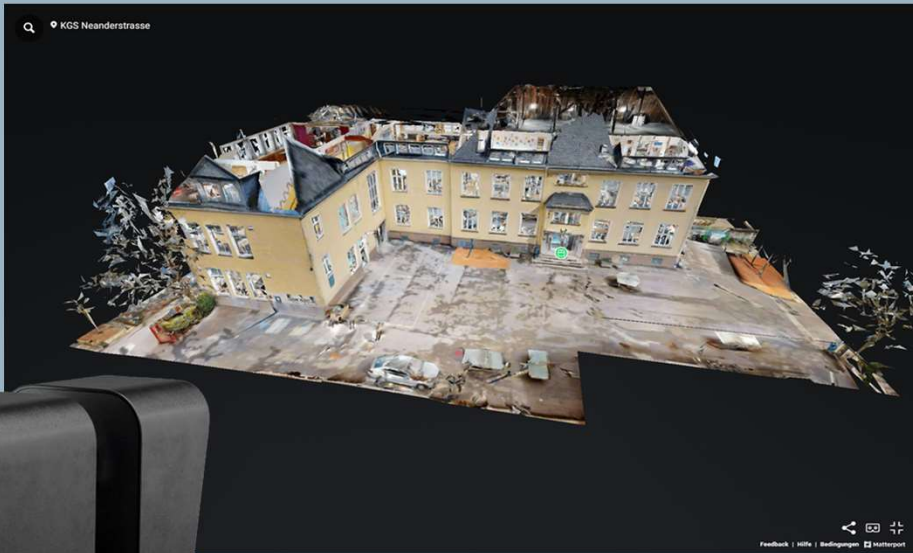
NACHBARN:

Fransj Kessmann

BÄUERER:

M. KIEB  
Hoch- und Tiefbau  
Zentrum für Planung und Bau  
NEUMARKT i. Opf.

ARCHIT. HA. KIEB  
AR.  
NEUMARKT i. OPF.







A photograph of two business professionals, a woman with long blonde hair and a man with a beard and glasses, both in white shirts and dark jackets. They are looking down at a tablet held by the man. The image is overlaid with a complex network of white lines and nodes, resembling a circuit board or data flow diagram. The word "DATA" is prominently displayed in the center in a large, white, sans-serif font.

DATA





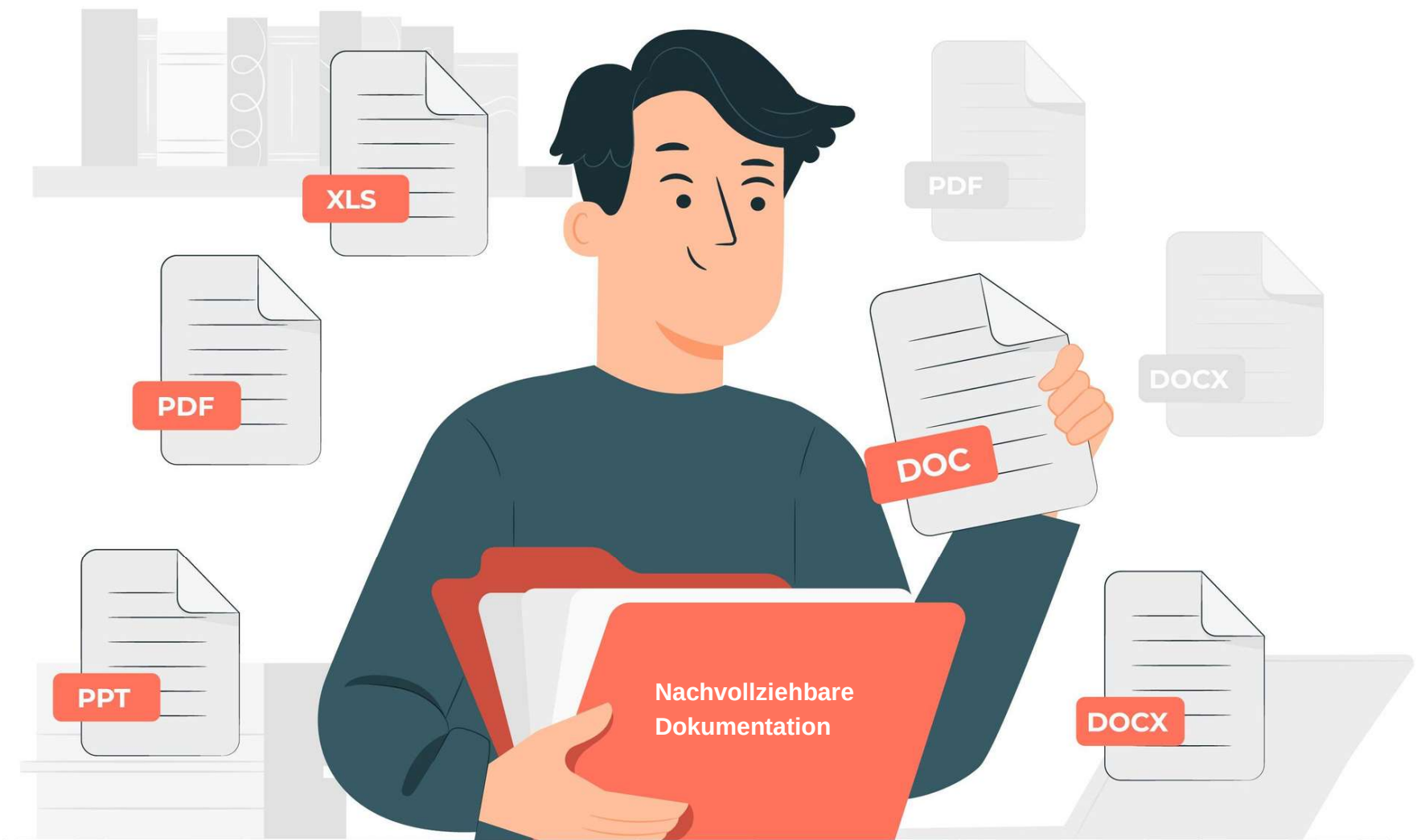


Intuitive Zustandsbewertung









XLS

PDF

PDF

DOCX

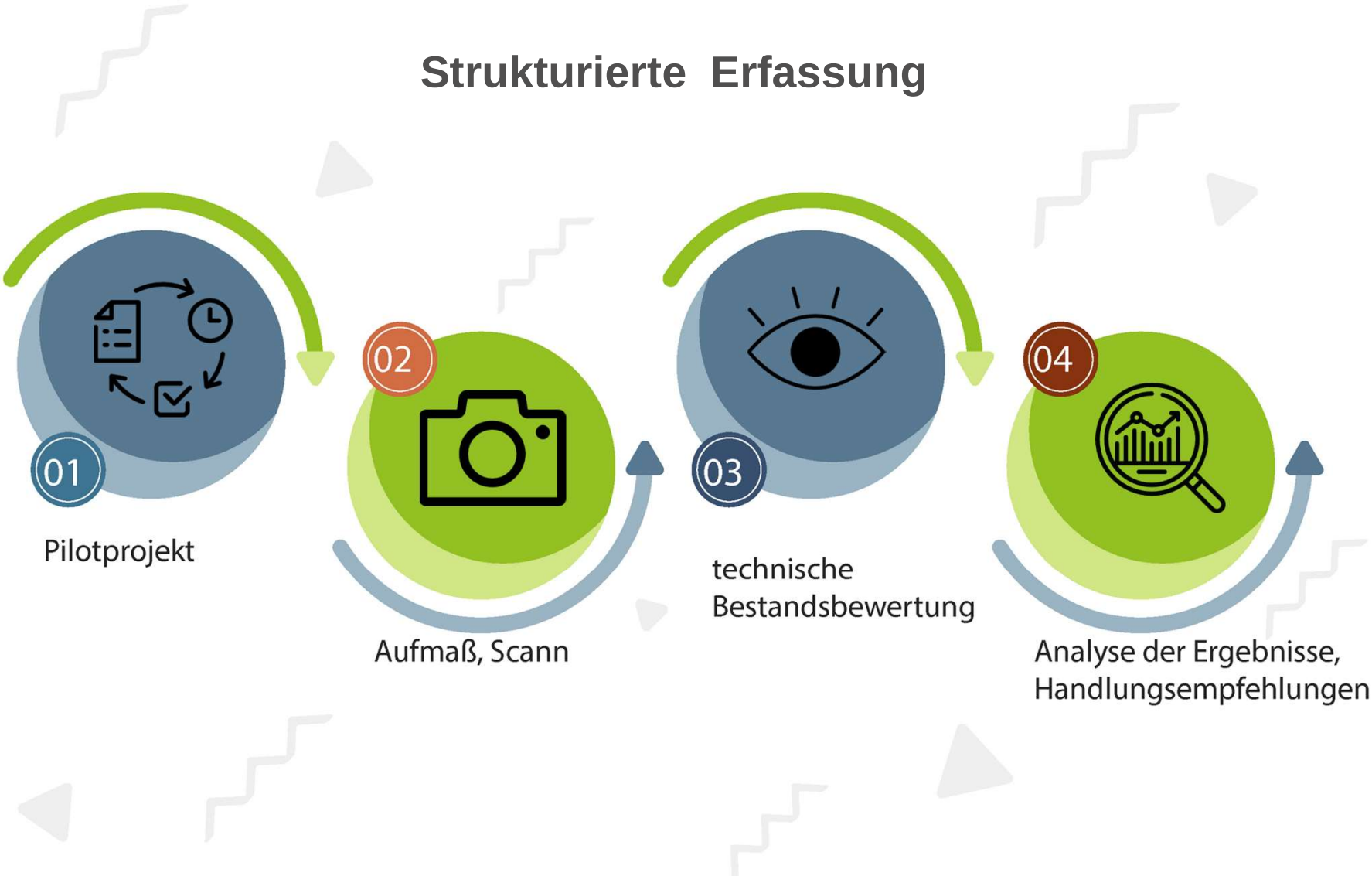
DOC

PPT

Nachvollziehbare  
Dokumentation

DOCX

# Strukturierte Erfassung







*Energetische  
Sanierung*

# Haben Sie noch Fragen?



**Matthias Mand**

Head of Sales

0761 707 590 13

[m.mand@plan4software.de](mailto:m.mand@plan4software.de)

PLAN4